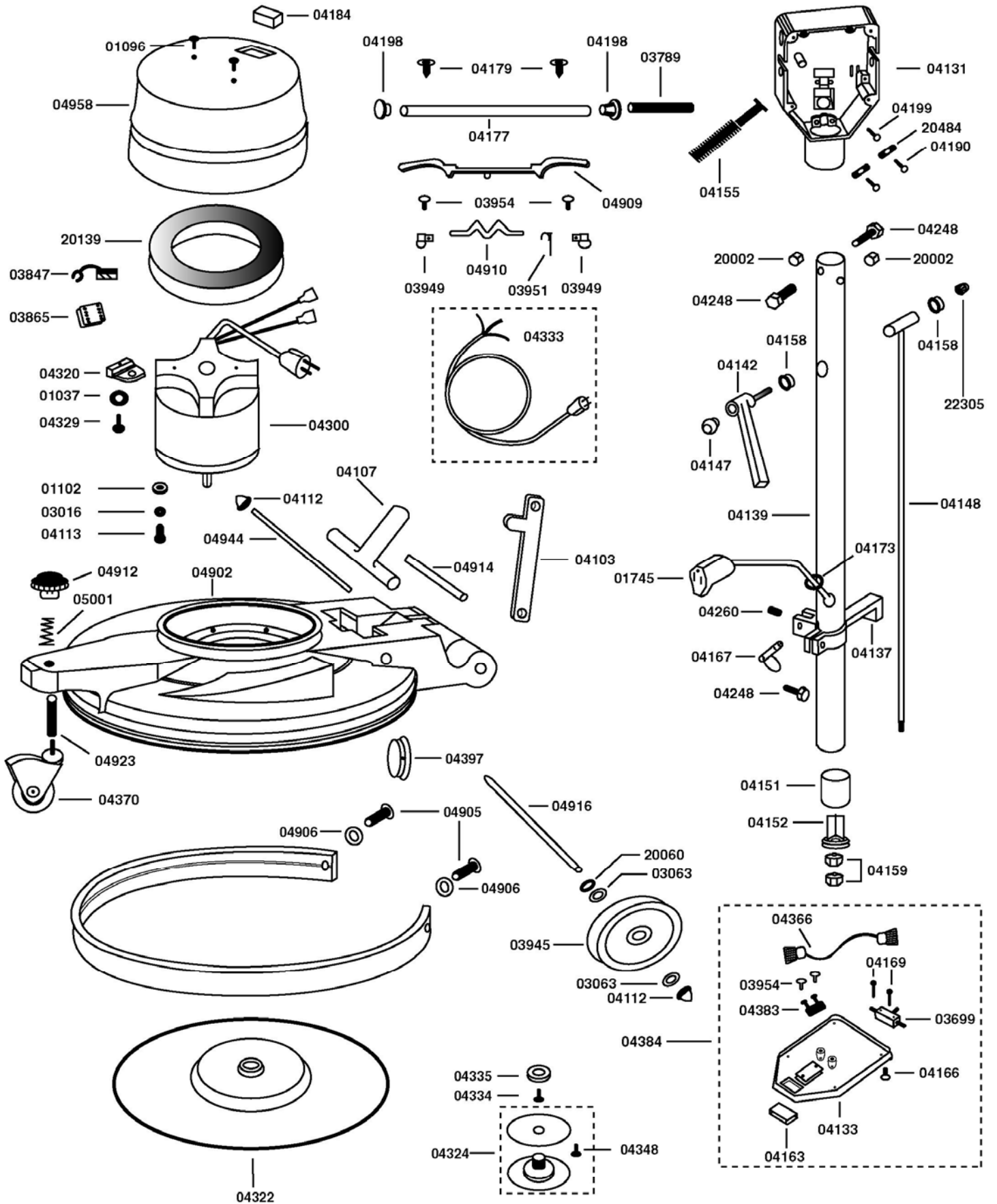


SPECTRA UHS 750/1500 - 20"

July 2001



Spectra UHS 750/1500 - 20"

Parts List

July 2001

| Item | Description | Qty | Item | Description | Qty |
|-------|----------------------------|-----|-------|-----------------------------|-----|
| 01037 | 3/8 Spring Lock Washer | 4 | 04190 | 8-32 X 1/2 Taptite Phillips | 4 |
| 01096 | 10-24 X 1/2 PHS Phillips | 2 | 04198 | Handle Tube Plug | 2 |
| 01102 | 5/16 Flat Washer | 4 | 04199 | 8-32 X 1/4 Taptite Phillips | 1 |
| 01745 | Pigtail Female 42" | 1 | 04248 | 1/4-20 X 3/4 HHCS | 3 |
| 03016 | 5/16 Spring Lockwasher | 4 | 04260 | 5/16-18 X 6/16 Set Screw | 1 |
| 03063 | 1/2 " Nylon Washer | 4 | 04300 | Motor UHS 1500 RPM | 1 |
| 03699 | Micro Sw. 1-1/2 HP | 1 | 04320 | Support Bracket | 4 |
| 03789 | Handle Grip Foam | 2 | 04322 | Flexible Drive Assembly | 1 |
| 03847 | Motor Brush | 4 | 04324 | UHS Pad Centre Lok | 1 |
| 03865 | Rectifier | 1 | 04329 | 3/8-16 X 5/8 HHCS | 4 |
| 03945 | Wheel 5" | 2 | 04333 | 14/3 X 75 FT Cord Set | 1 |
| 03949 | Knob Safety Switch | 2 | 04334 | 5/16-18 SHCS | 1 |
| 03951 | Spring Safety Switch | 1 | 04335 | Cup Washer | 1 |
| 03954 | 6-32 X 1/4 Tap Screw | 4 | 04348 | #8 X 5/8 PHSMS | 6 |
| 04103 | Handle Brace Painted | 1 | 04366 | Wire Lead Switch Box | 1 |
| 04107 | T-handle Support Paint | 1 | 04370 | Caster UHS B/R Support | 1 |
| 04112 | Axle End Caps | 4 | 04383 | Speed Control UHS | 1 |
| 04113 | 5/16-18 X 1-1/2 HBB | 4 | 04384 | UHS Sw Box Cover Assy | 1 |
| 04131 | Switch Box | 1 | 04397 | UHS Chassis Plug | 1 |
| 04133 | Switch Box Cover | 1 | 04905 | 1/4-20 X 3/4" PHS | 2 |
| 04137 | Brace Lock Painted | 1 | 04906 | 1/4" Lg. Dia. Washer | 2 |
| 04139 | Handle Tube Plated | 1 | 04909 | Trigger | 1 |
| 04142 | Cam Lever Assembly | 1 | 04910 | Lever Safety Swtich | 1 |
| 04147 | Heyco Cam Lever Plug | 1 | 04912 | UHS Adjust Knob | 1 |
| 04148 | Extension Rod Welded | 1 | 04914 | Brace Axle Plated | 1 |
| 04151 | Tapered Sleeve | 1 | 04916 | Wheel Axle Plated | 1 |
| 04152 | Wedge Handle | 1 | 04922 | UHS Bumper | 1 |
| 04155 | Anti-Kink Spring | 1 | 04923 | UHS Wheel Stud | 1 |
| 04158 | Bushing | 2 | 04927 | Chassis-Assembly UHS | 1 |
| 04159 | 5/16-18 Nyloc Nut | 2 | 04944 | T-Support Shaft | 1 |
| 04163 | Hi-Lo Switch | 1 | 04958 | Motor Cover UHS | 1 |
| 04166 | 8-32 X 1/4 C Sunk Screw | 4 | 05001 | UHS Adjust Wheel Spring | 1 |
| 04167 | Hitch Pin | 1 | 20002 | 1/4-20 Nyloc Nut | 2 |
| 04169 | 6-32 X 7/8 Taptite Philips | 2 | 20060 | 1/2 Tension Washer TW8 | 6 |
| 04173 | Grommet 3/8" | 1 | 20139 | Shroud Filter Sm. Wet | 1 |
| 04177 | Handle Tube | 1 | 20484 | Cord Grip / Strain Relief | 2 |
| 04179 | #14-1/1/2 Type A Screw | 2 | 22305 | 3/8-16 Acorn Nut Flange | 1 |
| 04184 | Indicator Light | 1 | | | |