

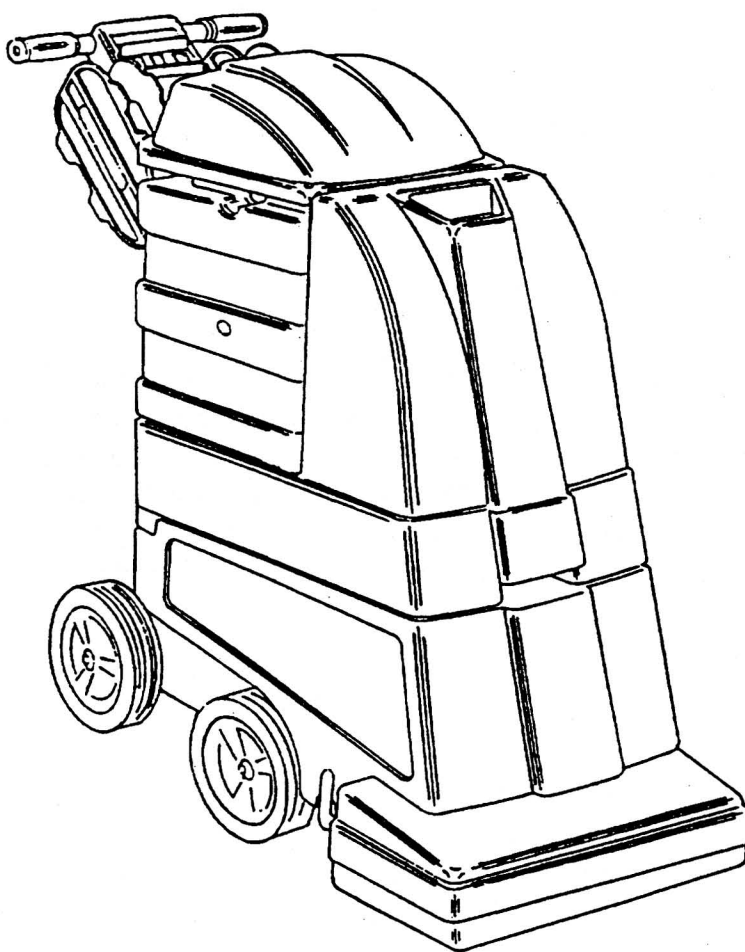
# POLARIS AND SUPERNOVA

---

# OWNER'S MANUAL

# & PARTS LIST

This equipment is intended for commercial use only.



## POLARIS 500 & 700

## SUPERNOVA 700



## **BEFORE OPERATING THE MACHINE**

---

Read the manual carefully and completely before attempting to operate the unit. This manual has important information for the use and safe operation of the machine. Keep this manual handy at all times. This machine will ensure years of satisfactory service if operated and maintained according to recommendations in the manual. If additional information is needed, please contact your local distributor or write to:

EDIC  
1753 Blake Avenue  
Los Angeles, California 90031-1006

All information and specifications printed in the manual and parts list are current at the time of printing; however, because of EDIC's policy of continual product improvement, we reserve the right to make changes at any time without notice.

This machine is shipped with antifreeze in the solution line system to protect the pump and valves from freezing during transport and storage. Before you use the unit, rinse the solution line system with clean water (See Preparing The Machine).

## **WARNING**

---

- The machine was designed for use on carpet, floor and upholstery extraction application as per instructions and recommendations written in this manual. Any deviation from its proper use or purpose and the consequential damage that may occur is the sole responsibility of the end user.
- Disconnect the power cord from outlet before servicing. Do not leave machine connected to an electrical outlet when unattended.
- Do not immerse or use this machine in standing water. Such use may cause electric shock.
- This equipment is not designed to handle or use combustible/volatile substance such as gasoline or kerosene, in, on, or near the machine. The use of such materials will cause an extreme hazard condition.
- When using an extension cord, use only a 3 conductor grounding cord—12 ga. wire or heavier.
- To avoid electric shock, do not expose the unit to rain—store it indoors only.
- Do not use the machine for dry vacuuming. This machine is not outfitted with a fine dust filter and it will damage the vacuum motor(s).

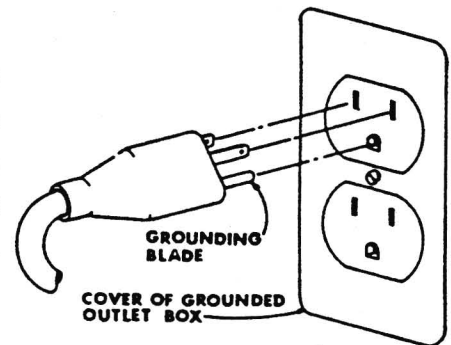
- Use defoamer at all times to prevent damage to the vacuum motor(s).
- Do not use water in excess of 140°F (62°C).
- Use only commercially available carpet cleaners and defoamer intended for use with machines of this type. Do not use dyes, bleaches, ammonia or other additives. The use of powdered cleaning solution if not diluted properly made result in damage to the pump.
- Do not expose machine to freezing temperatures.
- All repairs must be done by an authorized EDIC repair station.
- Do not use replacement parts other than those specified in the parts list.

FAILURE TO COMPLY WITH THE ABOVE WARNING INSTRUCTIONS WILL VOID THE WARRANTY.

### **GROUNDING INSTRUCTIONS**

---

The 120 V. A/C and the 220 V. A/C models have been outfitted with the appropriate grounded connectors. Make sure the machine is connected to a grounded outlet having the same configuration as the grounded plug. No adapter should be used with this machine. Any modification to the connectors will void the warranty.



### **PREPARING THE MACHINE**

---

1. Rinse then fill the recovery pail with clean hot tap water (not to exceed 140°F). When pouring water, make sure drain hose is clipped in the upright position. Pour the water into the solution tank.
2. Add recommended amount of cleaning solution to the tank, follow mixing directions on label for best results.
3. Set the recovery pail back in place. Add recommended amount of defoamer to the recovery pail. Close the lid.

### **TO CLEAN CARPET**

---

1. Connect machine to a grounded electrical outlet.
2. Turn on the VACUUM, PUMP and BRUSH switches.
3. Lift up on the handle grips to insure that the front of the machine rests on the carpet. Slowly pull the machine backwards while pressing on the carpet spray switch (below the left handle grip). Monitor the extraction process through the vacuum lid. Release the spray switch 6 inches before ending the stroke.

**NOTE:** On Supernova models the "Activate" switch operates the solution release and brush. Use the direction lever to operate the machine in the direction you wish to clean.

NOTE: If dirty solution does not appear through the vacuum lid check to be sure if:

- The vacuum lid is resting properly on the recovery pails
- The machine's nose is touching the carpet in the working mode.
- The solution tank is not empty.

4. Roll the machine forward on its four wheels for next stroke. Make overlapping passes to prevent streaking. Check solution level from time to time (see solution indicator tube on rear left corner of the back).

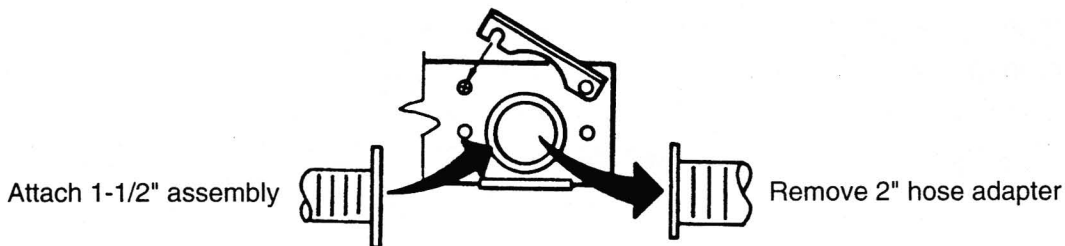
NOTE: If foam appears on vacuum lid, turn the VACUUM SWITCH OFF IMMEDIATELY. Add more defoamer to the recovery pails to dissolve foam or empty the recovery pails.

5. When the solution tank runs empty, turn off the vacuum, pump and brush switches. Empty the recovery pail and rinse thoroughly. Then repeat steps on PREPARING THE MACHINE.

### **TO ATTACH ACCESSORY HOSE**

---

1. Remove 2" hose adapter connection from machine.
2. Attach 1 1/2" assembly with adapter plate to vacuum lid inlet.
3. Pull back female quick disconnect sleeve on the machine and insert male plug on the solution hose.



### **TO EMPTY THE SOLUTION TANK**

---

1. Unhook the drain nozzle (located on the side of the machine from the drain clips), placing the end of the hose into the recovery pail.

### **AFTER EACH USE**

---

- Empty and thoroughly rinse the recovery pail.
- Coil power cord onto the cord wrap.
- Remove dirt and lint build-up inside vacuum lid filter screen.
- Clean solution line filter.
- Wash the vacuum lid with a soap solution and sponge to prevent dirt from accumulating on the surface. (To avoid scratching use soft cloth only).
- Lean the machine back on its 4 wheels during storage or when it's not in use to prevent brush distortion.)

## **MAINTENANCE**

---

The upright extractor is engineered for minimum maintenance. But it does require some care to keep it in optimum working condition. Careful attention to these maintenance instructions will give you maximum operating performance and life expectancy of the machine.

- Solution line, fittings and accessory tools. —Flush the machine and accessories at least once a month with solution of 1 part water to 3 parts white vinegar to neutralize the alkaline residue left by the cleaning solution.
- Filter Solution screen. —Unscrew bowl and rinse screen in running tap water. If screen is clogged up with soap, soak in vinegar solution and brush clean.
- Vacuum lid screens. —Always keep the screen clean in order to maintain maximum suction and airflow performance from the vacuum motor. The screens also prevent lint from accumulating in the vacuum motor fan chamber thus increasing the productive life of the motor. Do not operate the unit without the screen installed! If the screen gets lost or damaged, replace it immediately.
- Quick disconnect coupler. —Spray with lubricant (WD-40) or equivalent to prevent coupler from sticking.

## **TROUBLESHOOTING** Polaris and Supernova Models

---

*For additional Supernova troubleshooting see page 7 thru 12*

### **ELECTRICAL SYSTEM**

PROBLEM	POSSIBLE CAUSE
No electrical power.	<ol style="list-style-type: none"><li>1. Defective power cord.</li><li>2. House or building circuit breaker trips.</li></ol>
Switch is turned on. Power is intermittent to motor.	<ol style="list-style-type: none"><li>1. Faulty electrical cable.</li><li>2. Defective Switches.</li><li>3. Loose terminal or discolored terminal connections.</li></ol>

### **VACUUM SYSTEM**

PROBLEM	POSSIBLE CAUSE
No Vacuum	<ol style="list-style-type: none"><li>1. Vacuum lid is not resting on recovery pail.</li><li>2. Loose vacuum hose, vacuum connection.</li></ol>
Low Vacuum	<ol style="list-style-type: none"><li>1. Accumulated dirt on lid screen.</li><li>2. Worn out vacuum lid gasket.</li><li>3. Lint &amp; dirt build-up on suction head. (brush chamber).</li><li>4. Defective vacuum hose.</li><li>5. Loose connection in the vacuum motor.</li></ol>

## SOLUTION SYSTEM

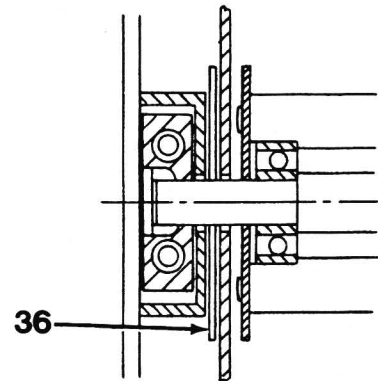
PROBLEM	POSSIBLE CAUSE
Pump motor on, no spray thru carpet spray tips or accessory tool	<ol style="list-style-type: none"> <li>1. Clogged spray tips.</li> <li>2. Clogged solution intake filter screen.</li> <li>3. Clogged solenoid valve or open solenoid coil.</li> <li>4. If carpet spray works normally, plugged up female quick disconnect coupler.</li> <li>5. Punctured pump diaphragm.</li> <li>6. Defective pump check valve.</li> <li>7. Crack in pump housing.</li> <li>8. Debris in check valve.</li> </ol>
Uneven or weak spray from tips.	<ol style="list-style-type: none"> <li>1. Clogged or dirty spray tips.</li> <li>2. Accumulated dirt on solution intake filter screen.</li> <li>3. Accumulation of debris inside pump and plumbing.</li> <li>4. Worn pump bearing (excessive noise).</li> <li>5. Punctured pump diaphragm.</li> <li>6. Defective rectified</li> </ol>
Carpet spray is turned off solution still drips from spray tips.	<ol style="list-style-type: none"> <li>1. Debris caught in between the 3 solenoid valve parts and the plunger.</li> </ol>
Vacuum motor working pump motor fails to turn on.	<ol style="list-style-type: none"> <li>1. Loose "Molex" plug connector. Loose wiring connection.</li> <li>2. Defective pressure switch in pump motor (100 psi model).</li> <li>3. Defective pump motor or rectifier.</li> </ol>

## ROTARY BRUSH SYSTEM

PROBLEM	POSSIBLE CAUSE
Motor runs, brush won't spin.	<ol style="list-style-type: none"> <li>1. Loose pulley tension.</li> <li>2. String caught between walls.</li> </ol>
Brush motor fails to turn on after circuit breaker has been reset.	<ol style="list-style-type: none"> <li>1. Defective bridge rectifier.</li> <li>2. Defective motor.</li> </ol>
Floating brush won't move up and down.	<ol style="list-style-type: none"> <li>1. Debris caught inside the slide block guide.</li> </ol>

## **BRUSH DRIVE BELT SERVICE AND/OR REPLACEMENT (refer to parts diagram).**

1. Remove 2 1/4-20 hex screws attaching lower frame to upper frame.
2. Remove (2) spring cover plate assemblies and carefully remove springs from the slide blocks.
3. Loosen (2) 1/4-20 hex screws that hold brush motor bracket in place. Push bracket toward the front of the machine to loosen belt.
4. Remove right Open-End and left Pulley-End cover plates.
5. Slide brush assembly and slide blocks out from their guides. Replace worn and defective belt.
6. Reinstall above components. Clean accumulated lint or debris inside the slide block guides and check for wear on the teflon surfaces. Replace if necessary. The slide block washer (item #36) must be installed between the slide block guide and inside the divider wall. Adjust belt tension by moving motor bracket toward the rear. Apply minimum belt tension when the hex bolts are tightened to allow for a smooth vertical brush movement. A belt too loose will cause the belt to skip when brush is applied on the carpet. A belt too tight won't allow for up and down movement.



## **REPLACEMENT OF BRUSH ASSEMBLY AND/OR BEARINGS**

---

1. Repeat steps 1 thru 4.
2. Remove slide blocks from the ends of the brush shaft.
3. Remove (4) screws from string guard. Tap the shaft toward the right open end to remove the bearing.
4. Remove (4) screws from slinger and pull off brush core. Scrape off old sealant build up on the slinger and string guard. It is advisable to replace the two bearings every time the brush is replaced.
5. Reinstall the above component. CAUTION! Install shorter step on the shaft ends toward the left pulley side. Apply silicon sealant such as GE Silicon auto seal onto the ends of the brush core before reassembling the slinger and string guard.

# SUPERNOVA 700

## TROUBLE SHOOTING

### VACUUM VALVE

PROBLEM	POSSIBLE CAUSE	SOLUTION
Vacuum Valve, item (8) has an air flow leak.	<ol style="list-style-type: none"><li>1. Vacuum valve, item (8) out of adjustment causing vacuum valve seal, item (15), to be incorrectly positioned.</li><li>2. Damaged or worn vacuum valve seal, item (15).</li><li>3. Broken vacuum valve pull cable, item (23).</li><li>4. Loose or broken vacuum valve pull springs, item (25).</li><li>5. Damaged vacuum valve guide face gasket, item (15).</li><li>6. Damaged vacuum valve pressure balls, item (12), or vacuum valve pressure ball springs, item (13).</li></ol>	<p>Readjust. See Vacuum valve pull cable adjustment procedure.</p> <p>Replace.</p> <p>Replace.</p> <p>Reconnect or, if broken, replace.</p> <p>Replace.</p> <p>Replace.</p>
Vacuum valve, item (8) not functioning.	<ol style="list-style-type: none"><li>1. Vacuum valve springs, item (25), not connected or broken.</li><li>2. Broken pull cable, item (23).</li></ol>	<p>Reconnect, or, if broken, replace.</p> <p>Replace.</p>

### PULL CABLE MECHANISM

PROBLEM	POSSIBLE CAUSE	SOLUTION
Direction control lever arm, item (20), does not lock in the up position.	<ol style="list-style-type: none"><li>1. One or both shaft collar set screws, item (22) are loose.</li><li>2. Too much clearance between pull cable cam, item (18), and stop bracket, item (16).</li><li>3. Damaged plunger, item (19).</li></ol>	<p>Retighten set screws, item (22).</p> <p>Add spacer(s), item (17), as required to bring cam, item (18) flush with stop bracket, item (28)</p> <p>Replace.</p>
Pull cable, item (23), jumps out of pull cable cam, item (18), in down position.	<ol style="list-style-type: none"><li>1. Loose or broken vacuum valve springs, item (25).</li><li>2. Vacuum valve, item (8), is too low when in up position.</li></ol>	<p>Reconnect or, if broken, replace.</p> <p>Readjust. See vacuum valve pull cable adjustment procedure.</p>



# SUPERNOVA 700

## TROUBLE SHOOTING

### BRUSH MOTOR REVERSE

PROBLEM	POSSIBLE CAUSE	SOLUTION
Brush Motor fails to reverse when direction control lever arm, item (20), is in the up (backward) position.	<ol style="list-style-type: none"><li>1. Vacuum valve, item (8) does not reach its normal up position.</li><li>2. Defective reverse switch, item (11).</li><li>3. Loose switch connector, item (26).</li></ol>	<p>Adjust the pull cable jacket, item (1), and switches, item (11), as shown in the adjustment instruction section.</p> <p>Replace.</p> <p>Check color coding before connecting terminals. Reconnect terminals to obtain proper connection. Replace wire assembly if necessary.</p>
Brush Motor fails to reverse when direction control lever arm, item (20), in the down (forward) position.	<ol style="list-style-type: none"><li>1. Vacuum valve, item (8) does not reach its normal down position.</li><li>2. Defective reverse switch, item (11).</li><li>3. Loose switch connector, item (26).</li></ol>	<p>Adjust the pull cable jacket, item (1), and switches, item (11), as shown in the adjustment instruction section. Remove any dirt or foreign objects from between the vacuum valve, item (16), in down position, and the bumper, item (29). Replace vacuum valve springs, item (25), if broken or stretched.</p> <p>Replace.</p> <p>Check color coding before connecting terminals. Reconnect terminals to obtain proper connection. Replace wire assembly if necessary.</p>

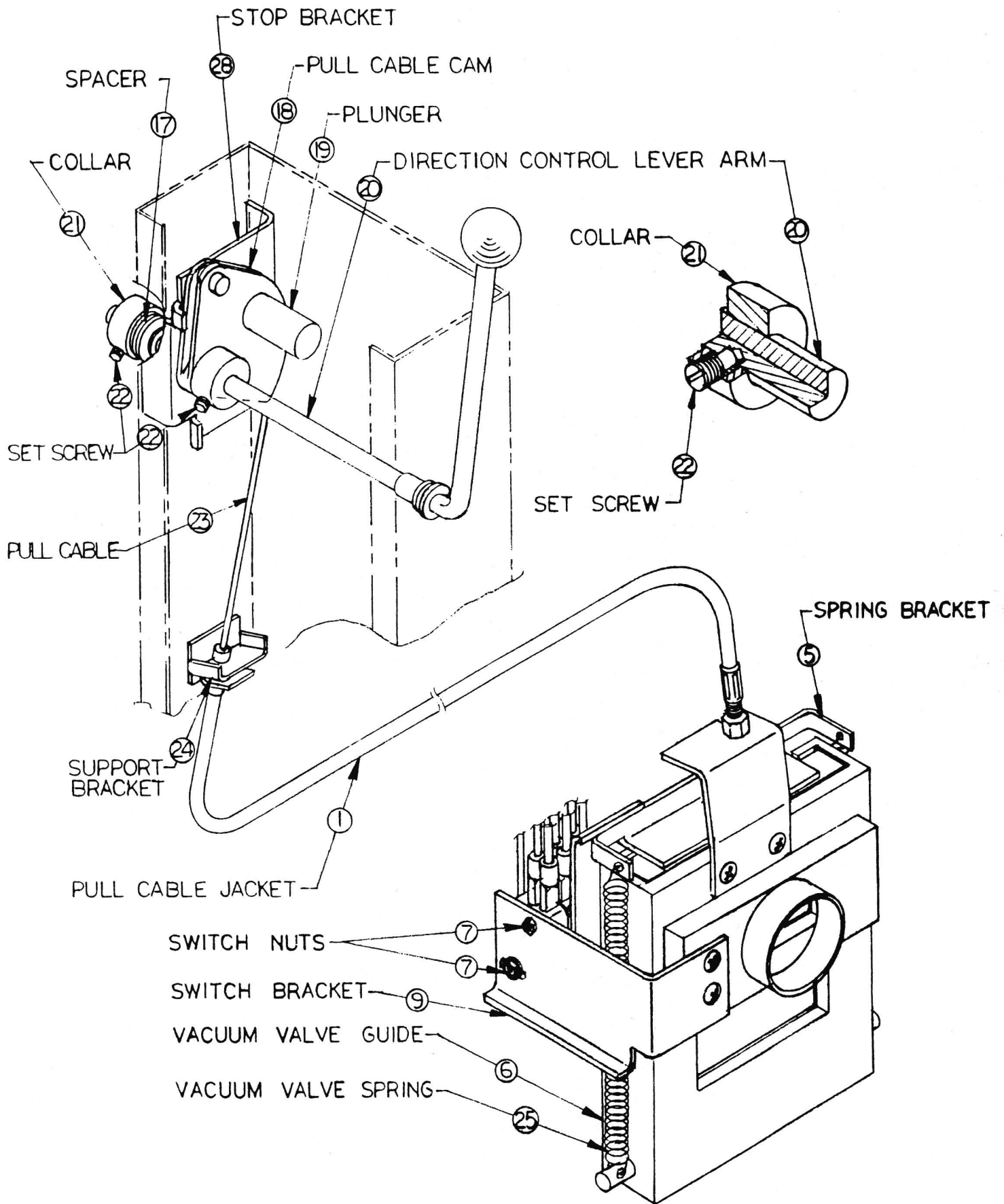
**SUPERNOVA 700**  
**VACUUM VALVE AND BRUSH MOTOR REVERSE SWITCH**  
**ADJUSTMENT PROCEDURES**

**VACUUM VALVE PULL CABLE ADJUSTMENT** \_\_\_\_\_

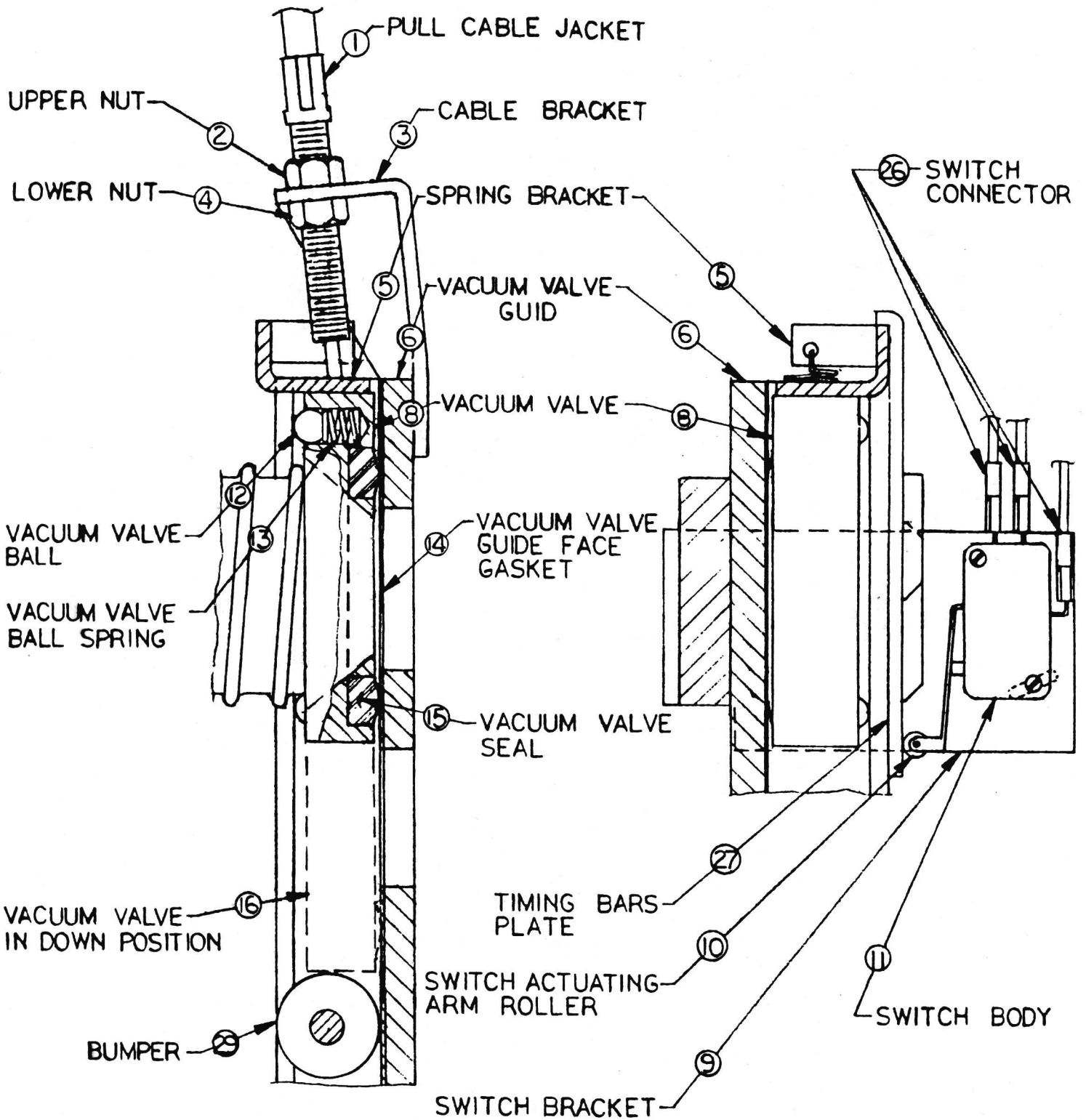
1. Drain the solution tank, and remove the recovery pail from the machine.
2. Make sure the power cord is unplugged from the power receptacle.
3. Shift the direction control lever arm to the up (backward) position.
4. Open the machine's motor housing by actuating the latch handle lever and lifting the motor housing from the front.
5. To MOVE THE VACUUM VALVE, item (8), UP:
  - Step 1. Loosen the lower pull cable jacket nut, item (4).
  - Step 2. Tighten upper pull cable jacket nut, Item (2), until the desired position is reached. [In its normal position, the upper edge of the spring bracket, item (5), is flush with the upper edge of the vacuum valve guide, item (6).]
  - Step 3. Retighten lower cable jacket nut, item (4).
6. To MOVE THE VACUUM VALVE, item (8), DOWN:
  - Step 1. Loosen the upper cable jacket nut, item (2), until the vacuum valve, item (8), reaches the desired position.
  - Step 2. Tighten the lower cable jacket nut, item (4).

**BRUSH MOTOR REVERSING SWITCHES ADJUSTMENT** \_\_\_\_\_

1. Drain the solution tank, and remove the recovery pail from the machine.
2. Make sure the power cord is unplugged from the power receptacle.
3. Shift the direction control lever arm to the up (backward) position.
4. Adjust the pull cable, if required, to insure that the vacuum valve is in the correct position. (See vacuum valve pull cable adjustment procedure.)
5. **Make the adjustment:**
  - Step 1. Slightly loosen the two switch nuts, item (7), located on the switch bracket, item (9).
  - Step 2. Rotate the three switches by pushing their bodies, item (11), toward the timing bar plate, item (27), until the switch actuating arm rollers, item (10), touch the timing bar plate, Item (27).
  - Step 3. While holding the switches, item (11), in position, retighten the two switch nuts, item (7).



ADJUSTMENT INSTRUCTIONS



# **PARTS DIAGRAM**

**POLARIS 500 & 700  
SUPERNOVA 700**

**POLARIS 500 & 700  
SUPERNOVA 700**

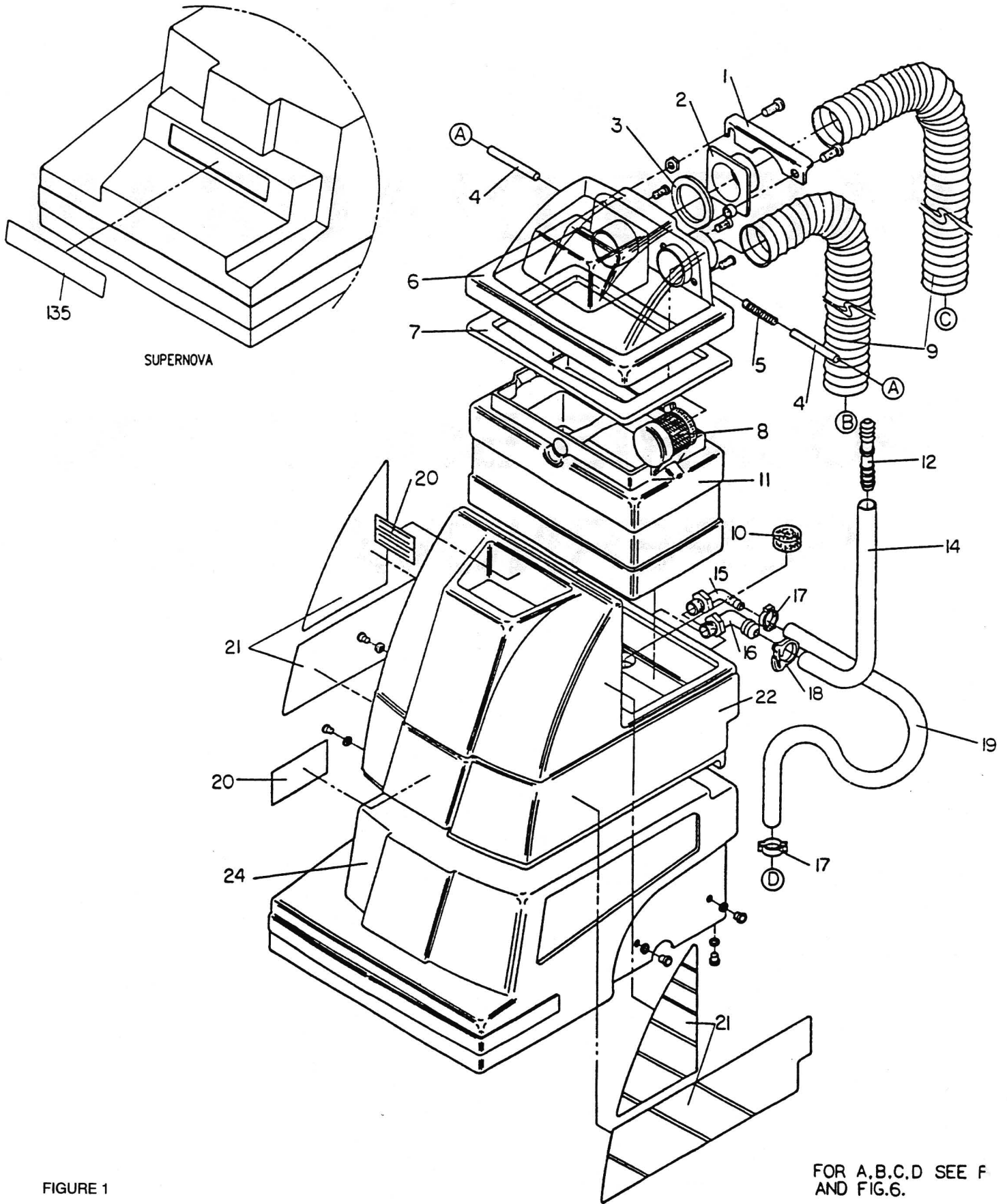
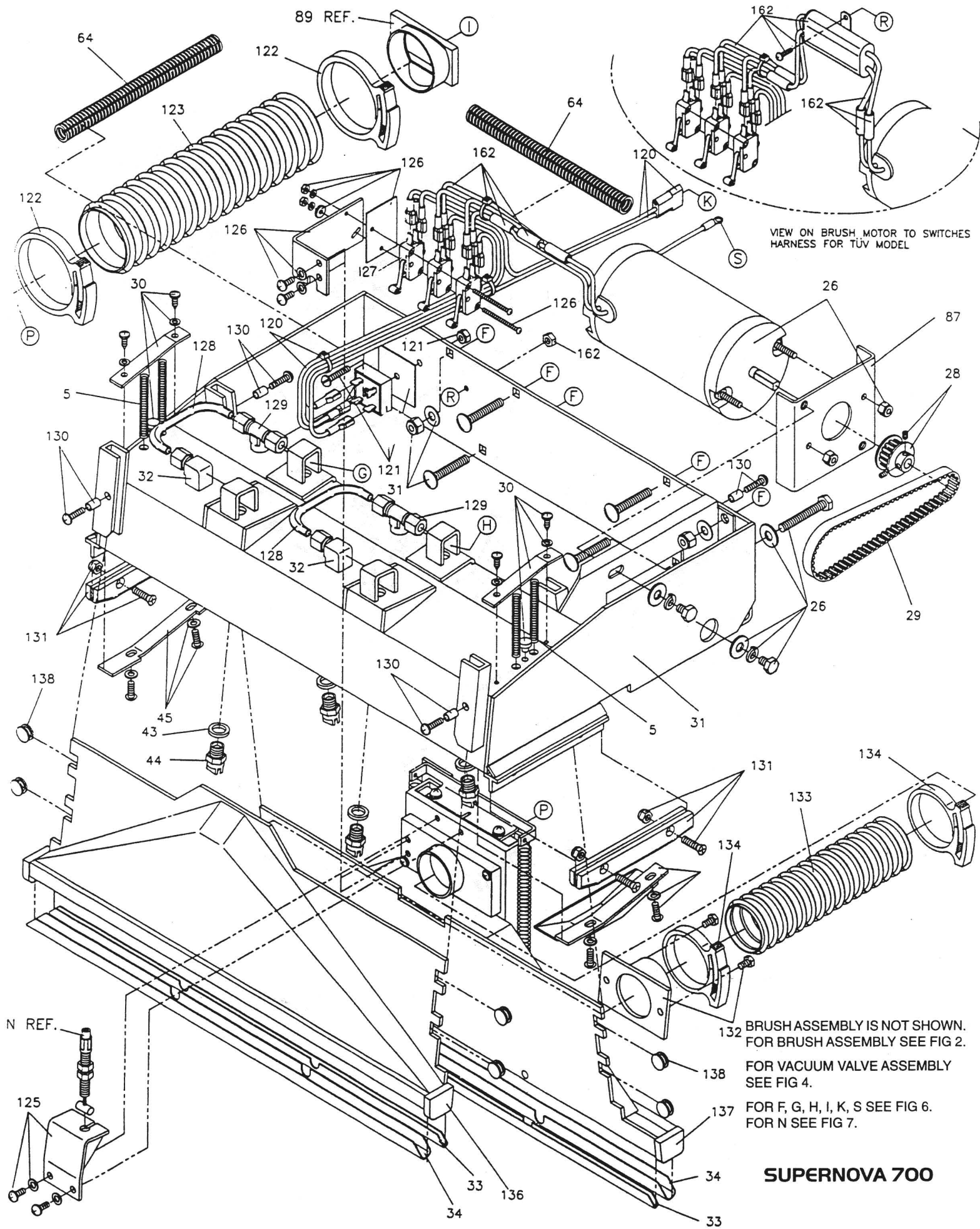


FIGURE 1

FOR A, B, C, D SEE F  
AND FIG. 6.





VIEW ON BRUSH MOTOR TO SWITCHES HARNESS FOR TÜV MODEL

132 BRUSH ASSEMBLY IS NOT SHOWN.  
FOR BRUSH ASSEMBLY SEE FIG. 2.  
FOR VACUUM VALVE ASSEMBLY  
SEE FIG. 4.  
FOR F, G, H, I, K, S SEE FIG. 6.  
FOR N SEE FIG. 7.

**SUPERNOVA 700**

FIGURE 3



**POLARIS 500 & 700**

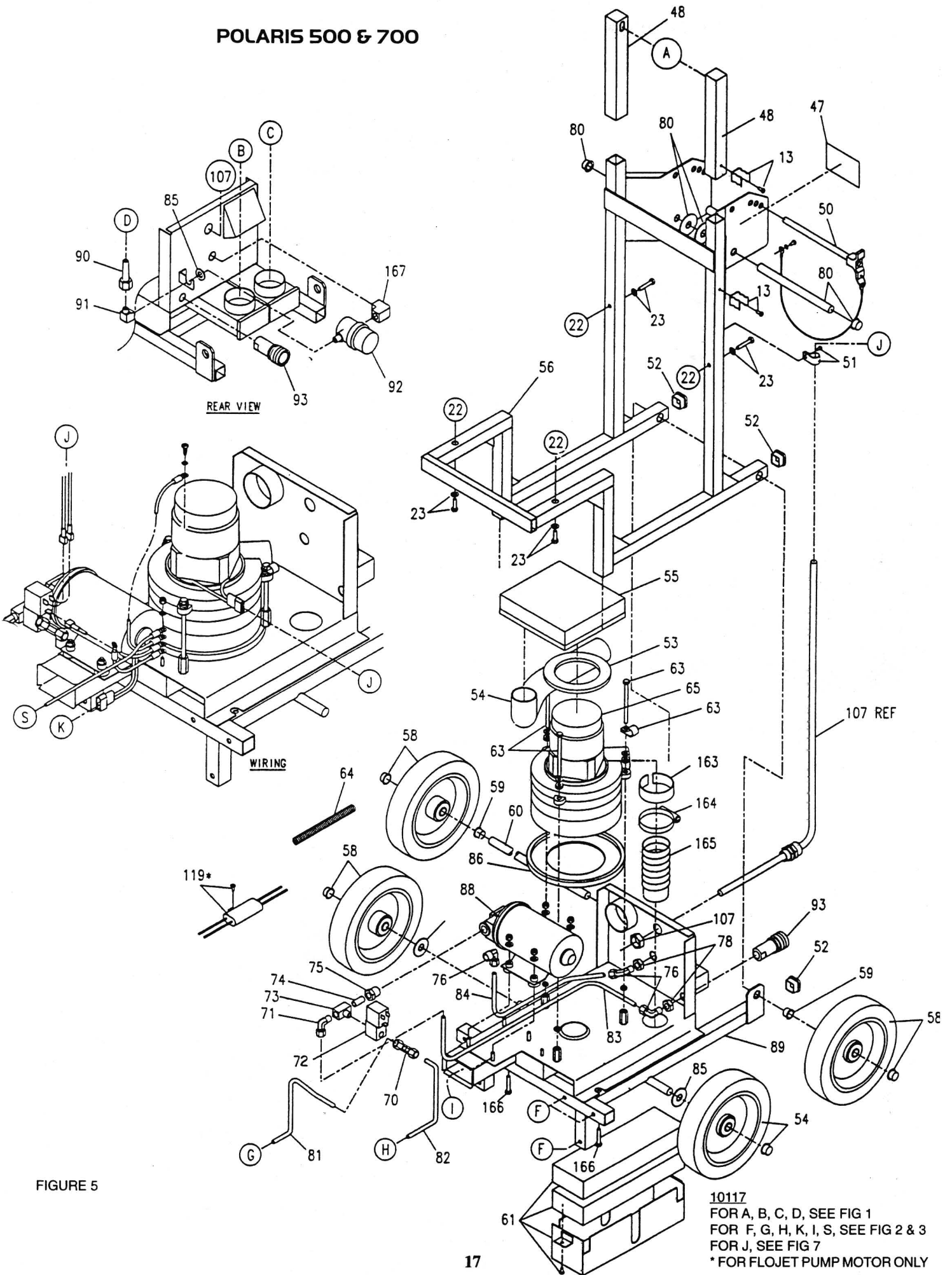


FIGURE 5

10117  
 FOR A, B, C, D, SEE FIG 1  
 FOR F, G, H, K, I, S, SEE FIG 2 & 3  
 FOR J, SEE FIG 7  
 \* FOR FLOJET PUMP MOTOR ONLY

# SUPERNOVA 700

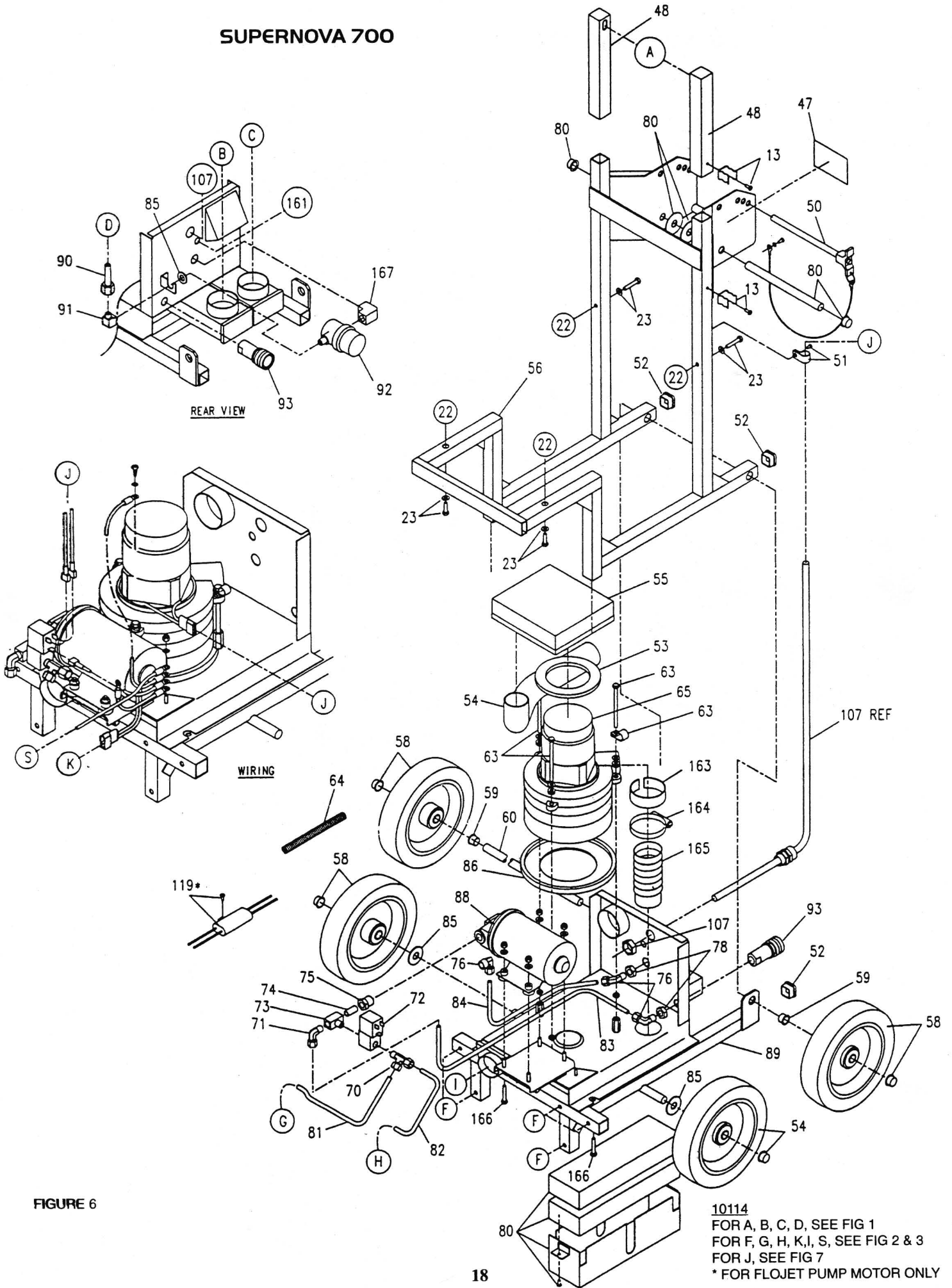
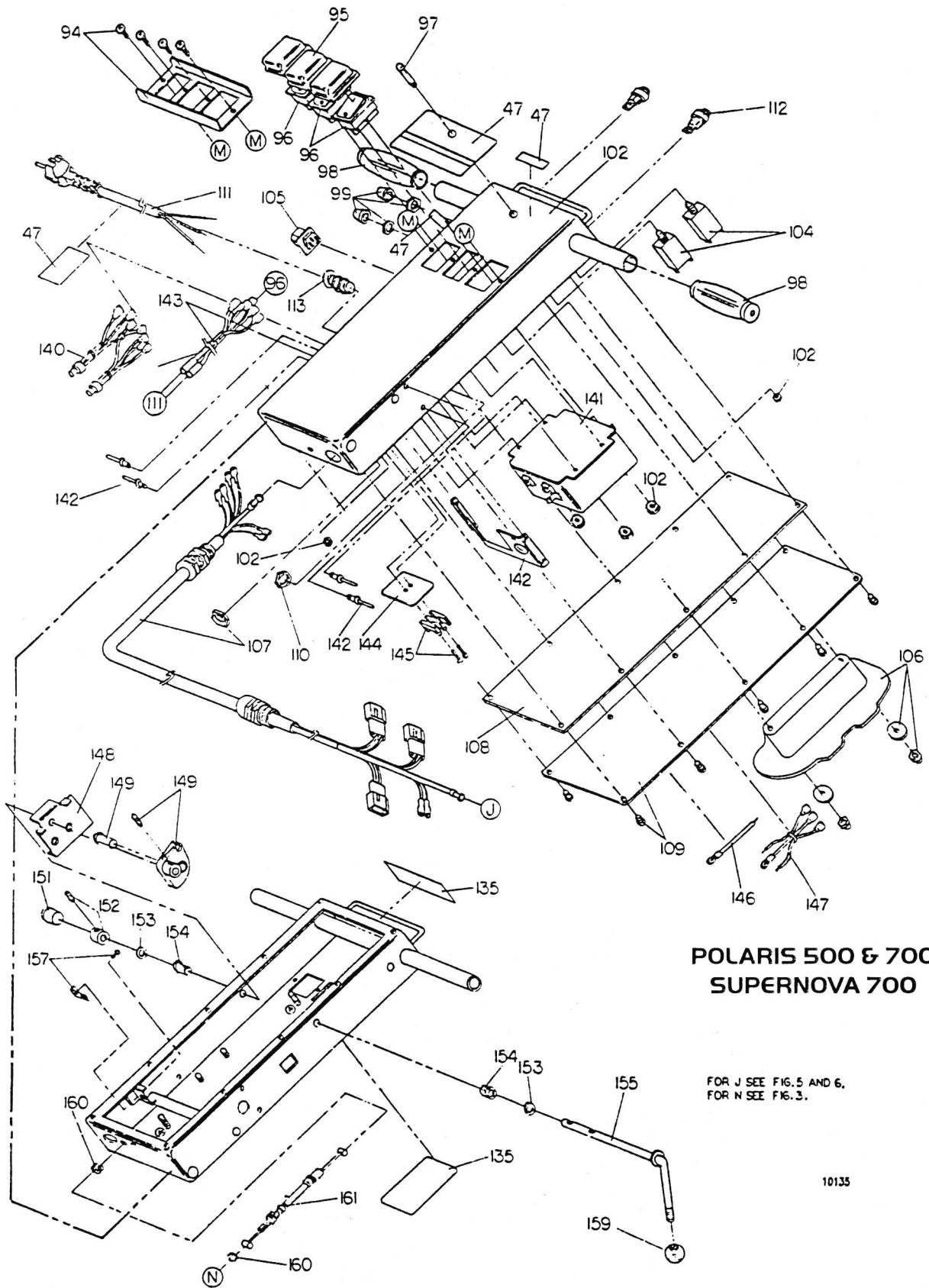


FIGURE 6

10114  
 FOR A, B, C, D, SEE FIG 1  
 FOR F, G, H, K, I, S, SEE FIG 2 & 3  
 FOR J, SEE FIG 7  
 \* FOR FLOJET PUMP MOTOR ONLY



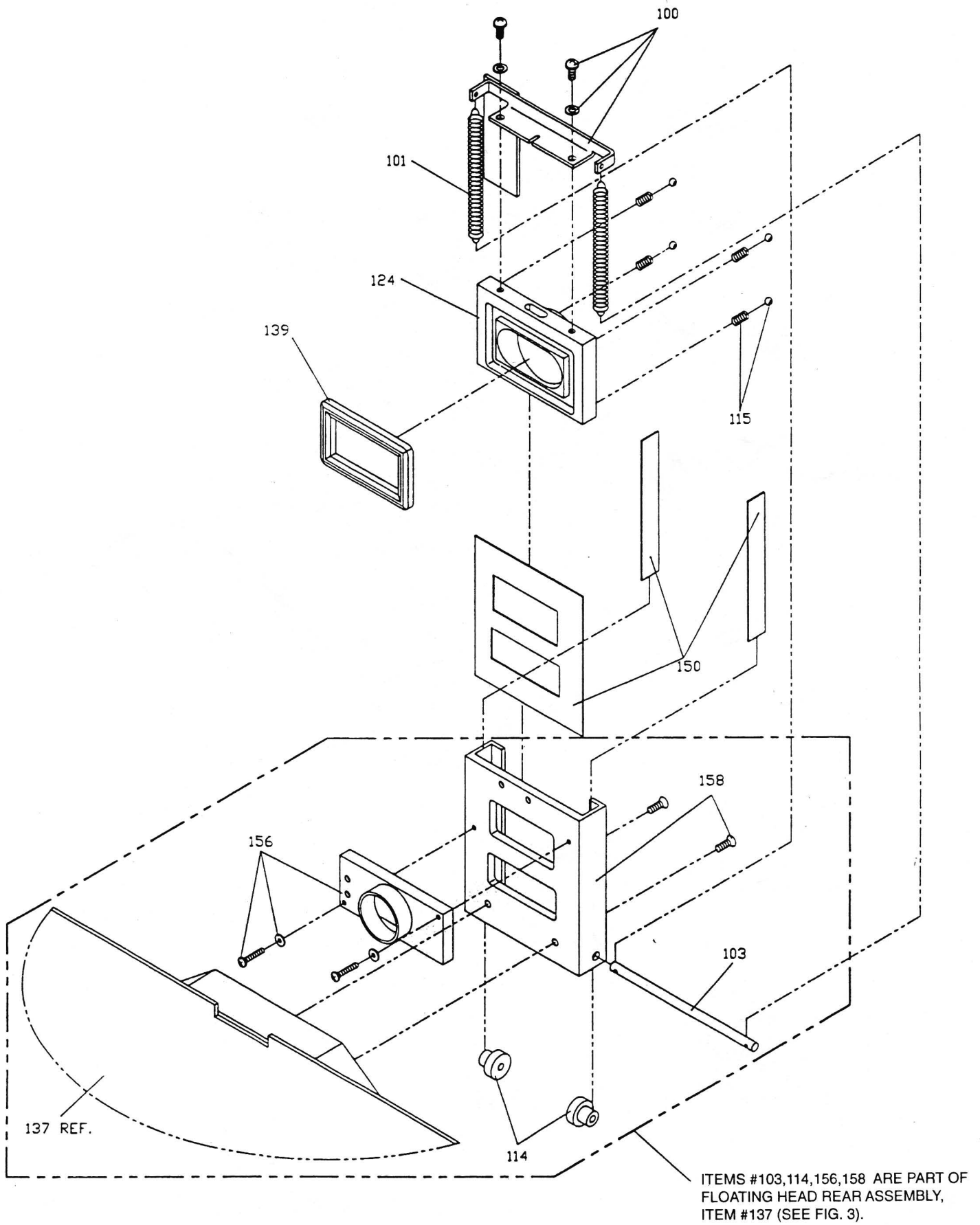
**POLARIS 500 & 700  
SUPERNOVA 700**

FOR J SEE FIG. 5 AND 6,  
FOR N SEE FIG. 3.

10135

ADDITIONAL PARTS FOR SUPERNOVA

FIGURE 7



**SUPERNOVA 700**

FIGURE 4

# PARTS LIST

## POLARIS AND SUPERNOVA 500 & 700 MODELS

Item	Description	Part No.		qty	fig
		Polaris	Supernova		
1	CLIP, ADAPTER RETAINER	D02391	D02391	1	1
2	HOSE, ADAPTOR	D02359	D02359	1	1
3	SEAL, VACUUM INTAKE	E02431	E02431	1	1
4	SHAFT, LID PIVOT	D02373-1	D02373-1	2	1
5	SPRING, DOME PIVOT	D02372	D02372	1	1
	SPRING, SLIDE BLOCK	D02372	D010159	4	2 & 3
6	VACUUM LID ASSEMBLY	80491-1A	80491-1A	1	1
7	GASKET, VACUUM LID	E03431	E03431	1	1
8	FILTER SCREEN ASSEMBLY, VACUUM LID	82407A	82407A	1	1
9	HOSE, VACUUM, 2" ID	J00618	J00618	2	1
10	PLUG, SOLUTION TANK	L00767	L00767	1	1
11	RECOVERY PAIL (POLARIS 500)	F02465-7	F02465-7	1	1
	RECOVERY PAIL (POLARIS 700)	F02465-6	F02465-6	1	1
12	DRAIN NOZZLE, 1/2 BARB x 1/2 BARB	A00165	A00165	1	1
13	CLIP ASSEMBLY, DRAIN HOSE	80263-3A	80263-3A	2	5 & 6
14	HOSE, DRAIN, 5/8 OD x 1/8 WALL	J00598	J00598	1	1
15	90 ELBOW, 1/2 MP x 3/8 BARB	A00138	A00138	1	1
16	90 ELBOW, 1/2 MP x 5/8 BARB	A00099	A00099	1	1
17	CLAMP, HOSE, 5/8	J00637	J00637	2	1
18	CLAMP, HOSE, 7/8	J00652	J00652	1	1
19	HOSE, SOLUTION, 3/8 ID	J00613	J00613	1	1
20	LABEL KIT	82570-1A	82570-1A	1	1
21	DECAL KIT (POLARIS 500)	H02561	H02561	1	1
	DECAL KIT (POLARIS 700)	H02552	H02552	1	1
22	SOLUTION TANK ASSEMBLY (POLARIS 500)	F02463-10	F02463-10	1	1
	SOLUTION TANK ASSEMBLY (POLARIS 700)	F02463-9	F02463-9	1	1
23	SOLUTION TANK MOUNTING KIT	82310A	82310A	1	5 & 6
24	HOUSING, MOTOR, 14"	F02470-3	F02470-6	1	1
	HOUSING, MOTOR, 17"	F02470-2	F02470-6	1	1
26	BRUSH DRIVE MOTOR ASSEMBLY (115V)	82538A	82524A	1	2 & 3
	BRUSH DRIVE MOTOR ASSEMBLY (220V)	82538-1A	82523A	1	2 & 3
27	WIRE ASSEMBLY, GROUND (BRUSH MOTOR)	00185-6A	00185-6A	1	2 & 3
	WIRE ASSEMBLY, GROUND (VACUUM MOTOR)	00185-6A	00185-6A	1	5
28	PULLEY, BRUSH DRIVE MOTOR	D00398-A	D00398-6	1	2 & 3
29	BELT, TIMING	L00779-1	L00779	1	2 & 3
30	COVER PLATE ASSEMBLY, SPRING	82378A	D010154	1	2 & 3

# PARTS LIST

## POLARIS AND SUPERNOVA 500 & 700 MODELS

Item	Description	Part No.		qty	fig
		Polaris	Supernova		
31	BRUSH CHAMBER ASSEMBLY (14")	82405A		1	2 & 3
	BRUSH CHAMBER ASSEMBLY (17")	82406A	D010055	1	2 & 3
32	90 ELBOW, 1/8 FP x 1/4 C (14")	A00144	A00144	1 (2)	2 & 3
	90 ELBOW, 1/8 FP x 1/4 C (17")	A00144	A00144	2	2 & 3
33	GLIDE, BACK (14")	D02388-1		1	2 & 3
	GLIDE, BACK (17")	D02389-1	D010076	1 (2)	2 & 3
34	GLIDE, FRONT (14")	D02388		1	2 & 3
	GLIDE, FRONT (17")	D02389	D010075	1 (2)	2 & 3
35	SLIDE BLOCK ASSEMBLY	80500A	80500A	2	2
36	WASHER, SLIDE BLOCK, 1/16 THK, 25/64 ID, 2" OD	F00504	F00504	1	2
37	STRING GUARD ASSEMBLY	82235A	82235A	1	2
38	BEARING, BRUSH	G00536	G00536	2	2
39	BRUSH, ROTARY (14")	F02475		1	2
	BRUSH, ROTARY (17")	F02476	F010057	1	2
40	SHAFT, BRUSH (14")	D02386		1	2
	SHAFT, BRUSH (17")	D02387	D02387	1	2
41	SLINGER ASSEMBLY, ROTARY BRUSH	82376A	82376A	1	2
42	PULLEY, ROTARY BRUSH	D00398-2	D00398-2	1	2
43	WASHER, 3/32 THK, 7/16 ID, 5/8 OD (14")	C02298	C02298	1	2 & 3
	WASHER, 3/32 THK, 7/16 ID, 5/8 OD (17")	C02298	C02298	2 (4)	2 & 3
44	SPRAY TIP (14")	A00091-1		1	2 & 3
	SPRAY TIP (17")	A00091	A00089	2 (4)	2 & 3
45	COVER PLATE ASSEMBLY, OPEN END	82368A	810152A		2 & 3
46	COVER PLATE ASSEMBLY, PULLEY END	82367A	810153A	1	2 & 3
47	LABEL KIT, ENGLISH	H00563	83547A	1	1,5,6,7
48	PIVOT EXTENSION LID FRAME (POLARIS 500)	D02344-1	D02344-1	2	5 & 6
	PIVOT EXTENSION, LID FRAME (POLARIS 700)	D02344	D02344	2	5 & 6
50	PIN ASSEMBLY, RETAINING	82383A	82383A	1	5 & 6
51	CLAMP ASSEMBLY, CORD	80187A	80187A	1	5 & 6
52	CAP, END	K00712-4	K00712-4	4	5 & 6
53	GASKET, COOLING AIR DUCT	E02450	E02450	1	5 & 6
54	HOSE, EXHAUST, 2"	J00654	J00654	1	5 & 6
55	DUCT, COOLING AIR	D02394	D02394	1	5 & 6
56	FRAME, UPPER	D02397	D010074	1	5 & 6
58	WHEEL ASSEMBLY	82535A	82535A	1	5 & 6
59	BUSHING	K00674	K00674	2	5 & 6
60	AXLE, WHEEL	D02398	D02398	1	5 & 6
61	MUFFLER KIT (OPTIONAL)	81331A	81331A	1	5 & 6

# PARTS LIST

## POLARIS AND SUPERNOVA 500 & 700 MODELS

Item	Description	Part No.		qty	fig
		Polaris	Supernova		
63	VACUUM MOTOR MOUNTING ASSEMBLY (2 STAGE)	82291A	8229A	1	5 & 6
	VACUUM MOTOR MOUNTING ASSEMBLY (3 STAGE)	80317-3A	80317-3A	1	5 & 6
64	LOOM, CORRUGATED	F00463	F0463	1	5 & 6
65	VACUUM MOTOR, 2 STAGE, 115V (POLARIS 500 14")	00520-1A	02517-2A	1	5 & 6
	VACUUM MOTOR, 2 STAGE, 115V (POLARIS 500 17")	02517-2A	02517-2A	1	5 & 6
	VACUUM MOTOR, 2 STAGE, 220V (POLARIS 500, 700)	02521A	02521A	1	5 & 6
70	BUSHING, 1/8 MP x 1/4 C	A00125		1	5
71	90 ELBOW, 1/8 MP x 1/4 C	A00132	A00132	1	5 & 6
72	SOLENOID, 1/8 NPT (115V)	G02536	G02536	1	5 & 6
	SOLENOID, 1/8 NPT (220V)	G02537	G02537	1	5 & 6
73	BRANCH TEE, MALE 1/8 NPT	A00152	A00152	1	5 & 6
74	NIPPLE, SHORT, 1/8 NPT	A00055	A00055	1	5 & 6
75	BUSHING, REDUCER, 3/8 NPT (50 PSI)	A00168-1	A00168-1	1	5 & 6
	BUSHING, REDUCER, 1/4 NPT (100 PSI)	A00168-18		1	5 & 6
76	90 ELBOW, 3/8 MP x 1/4 C (50 PSI)	A00133	A00133	1	5 & 6
77	90 ELBOW, 1/4 MP x 1/4 C (100 PSI)	A00140		1	5 & 6
78	NUT, HEX	A00124	A00124	2	5 & 6
80	SHAFT ASSEMBLY, HANDLE	804186A	80418-6A	1	5 & 6
81	TUBE, SOLENOID TO R SPRAY TIP (17")	A00085-9	A00085-17	1	5 & 6
82	TUBE, SOLENOID TO SPRAY TIP (14")	A00085-12	A00085-18	1	5 & 6
83	TUBE, PUMP TO ACCESSORY LINE	A00085-10	A00085-19	1	5 & 6
84	TUBE, PUMP TO SOLUTION INTAKE LINE	A00085-11	A00085-20	1	5 & 6
85	SPACER, 3/16 THK, 1/2 ID, 1" OD	C00240	C00240	3	5 & 6
86	GASKET, VACUUM MOTOR	E02448	E02448	1	5 & 6
87	BRACKET, BRUSH DRIVE MOTOR	D02370	D03385	1	2 & 3
88	PUMP, INTERNAL BYPASS, 115V, 50 PSI	00512A	00512A	1	5 & 6
	PUMP, INTERNAL BYPASS, 220V, 50 PSI	025141A	025141A	1	5 & 6
	PUMP, 115V, 100PSI	02513F-100A		1	5 & 6
89	LOWER FRAME ASSEMBLY	82359A	810070A	1	5 & 6
90	ADAPTER, 3/8 BARB x 1/4 FP	A00061	A00061	A	5 & 6
91	90 ELBOW, 1/4 FP x 1/4 MP	A00052	A00052	1	5 & 6
92	FILTER STRAINER, IN-LINE	K00709	K00709	1	5 & 6
	SCREEN, IN-LINE STRAINER	K00709-1	K00709-1	1	5 & 6
	CAP, IN-LINE STRAINER	K00709-2	K00709-2	1	5 & 6
93	QUICK DISCONNECT, 1/4 FP x 1/4 FP	A00102	A00102	1	5 & 6
4	SWITCH GUARD ASSEMBLY	82414A	82414A	1	7
95	COVER, ROCKER SWITCH	B00214-2	B00214-2	3	7
96	SWITCH, LIGHTED, ROCKER	B02211-1	B02211-1	3	7

# PARTS LIST

## POLARIS AND SUPERNOVA 500 & 700 MODELS

Item	Description	Part No.		qty	fig
		Polaris	Supernova		
97	LIGHT, INDICATOR, GREEN LENS	B02196	B02196	1	7
98	GRIP, HANDLE, BLACK	K00715B-1	K00715B-1	2	7
99	BOOT, FLEX, CIRCUIT BREAKER	B02193	B02193	1	7
	BOOT, FLEX, CIRCUIT BREAKER (TUV)	B02193	B02193	2	7
100	SPRING, BRACKET, VACUUM VALVE, ASSEMBLY		83349A	1	4
101	SPRING, VACUUM VALVE SLIDE RETURN		D03371	2	4
102	HANDLE, ADJUSTABLE	D02403	D02338-2	1	7
103	SHAFT, VACUUM VALVE		D03356	1	4
104	CIRCUIT BREAKER, 3 A	B02192		1	7
	CIRCUIT BREAKER, 4 A		B02192-1	1	7
	CIRCUIT BREAKER, 1.5 A (TUV)	B02191	B02191	1	7
105	OUTLET ASSY, ACCESSORY (OPTIONAL)	80188A	80188A	1	7
	OUTLET ASSY, ACCESSORY (250V TUV)(OPTIONAL)	80198A	80198A	1	7
106	CORD WRAP ASSEMBLY	82408A	82408A	1	7
107	CORD ASSEMBLY, HANDLE TO LOWER FRAME	00185-28A	B010090	1	5,6,7
	CORD ASSY, HANDLE TO LOWER FRAME (250VAC, TUV)	00185-33A	B010090		
108	GASKET, HANDLE	E03432	E03432	1	7
109	COVER PLATE ASSEMBLY	82409A	82409A	1	7
110	LOCK NUT (115VAC)	B02214	B02214	1	7
	LOCK NUT (250VAC)	B02214	B02214	1	7
111	CORD, POWER (115VAC)	B00221	B00221-4	1	7
	CORD, POWER (250VAC)	B00225	B00225	1	7
112	SWITCH, 10 A, 250VAC		B02173	2	7
113	STRAIN RELIEF, POWER CORD (115VAC)	B02215	B02215	1	7
	STRAIN RELIEF, POWER CORD (250VAC)	B02215	B02215	1	7
114	BUMPER, VACUUM VALVE		E03435	2	4
115	SPRING AND BALL KIT		83372A	1	4
116	RECTIFIER		M00843	1	2
119	RFI FILTER ASSEMBLY, 2A 250VAC		B02175	1	5 & 6
120	HARNESS, RECTIFIER		00185-41A	1	2 & 3
	HARNESS, RECTIFIER (250VAC, TUV)		00185-31A	1	2 & 3
121	MOUNTING BOARD	802171A	802202A	1	2 & 3
122	CLAMP, 2 1/8 x 2 3/8		J00657	2	3
123	HOSE, AIR VALVE ASSEMBLY, 2"		J00621	1	3
124	SLIDE, VACUUM VALVE, ASSEMBLY		D03364	1	4
125	BRACKET, FRONT, PULL CABLE ASSEMBLY		83382A	1	3
126	SWITCH BRACKET ASSEMBLY		83383A	1	3
127	SWITCH, MOTOR REVERSE		B02172	3	3



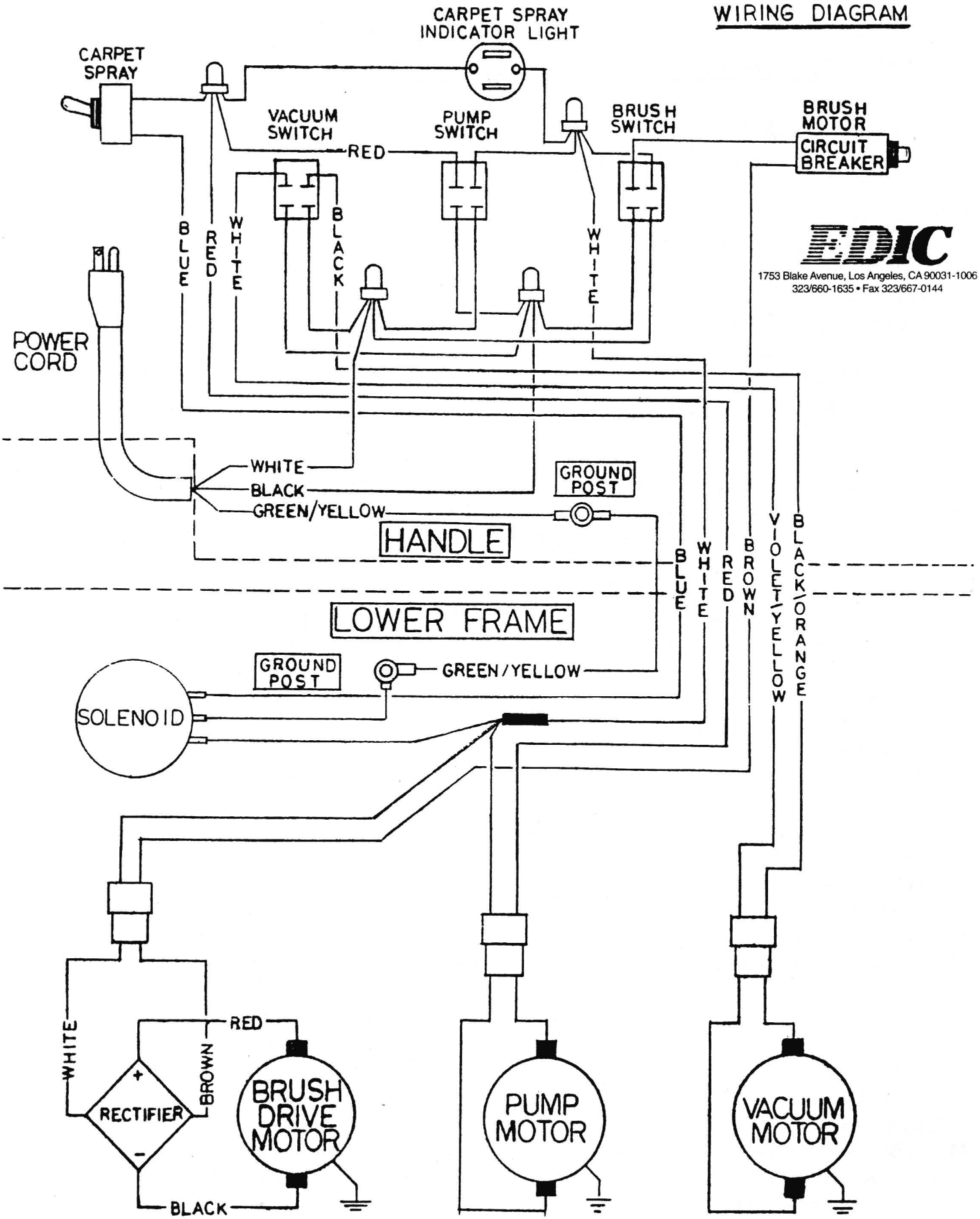
# PARTS LIST

## POLARIS AND SUPERNOVA 500 & 700 MODELS

Item	Description	Part No.		qty	fig
		Polaris	Supernova		
128	TUBE, TIP CONNECTOR		A00085-15	2	3
129	BRANCH TEE, FEMALE		A00156	2	3
130	FLOATING HEAD RETAINING PIN, ASSEMBLY		83374A	1	3
131	GLIDE, SIDE		80465A	1	3
132	ADAPTER, FRONT HEAD		83361A	1	3
133	HOSE, FRONT HEAD ASSEMBLY, 1 1/2"		J00618-1	1	3
134	CLAMP, 1 1/4 x 1 7/16		J00656	2	3
135	LABEL TWO-WAY		H03561	1	1
136	FLOATING HEAD, FRONT		810078A	1	3
137	FLOATING HEAD, REAR, ASSEMBLY		810072A	1	3
138	BUTTON, GLIDE		F00464	8	3
139	SEAL, SLIDE BLOCK		E03434	1	4
140	WIRE CONNECTOR ASSEMBLY, HANDLE, JUMPER		00185-37A	1	7
	WIRE CONNECTOR ASSEMBLY, HANDLE, JUMPER (250VAC, TUV)		00185-38A	1	7
141	FILTER, RFI, 16A, ASSEMBLY (250VAC, TUV)		B02174	1	7
142	SHIELD PLATE, RFI, ASSEMBLY (TUV)		D03371	1	7
143	HARNESS, RFI FILTER TO SWITCHES (250VAC, TUV)		00185-35A	1	7
	HARNESS, POWER CORD TO SWITCHES		00185-30A	1	7
144	INSULATOR, TERMINAL BLOCK (250VAC, TUV)		B02195	1	7
145	TERMINAL BLOCK (250VAC, TUV)		B02190	1	7
146	HARNESS, TERM BLOCK TO GROUND POST ASSY (250VAC, TUV)		00185-39A	1	7
147	HARNESS, TERM BLOCK TO RFI FILTER (250VAC, TUV)		00185-36A	1	7
148	STOP BRACKET		D03350	1	7
149	CAM WITH PLUNGER, PULL CABLE		83346A	1	7
150	GASKET, VACUUM VALVE GUIDE		80459A	1	4
151	CAP, PROTECTIVE		K02716	1	7
152	COLLAR, SHAFT, 3/8 ID		C02277	1	7
153	WASHER, TEFLON, 3/8 ID		C02287	2	7
154	BUSHING, 3/8 ID		K00678	2	7
155	LEVER ARM		D03347	1	7
156	ADAPTER PLATE, VALVE GUIDE		D03363	1	4
157	CLIP, PULL CABLE, ASSEMBLY		83357A	1	7
158	GUIDE, VACUUM VALVE, ASSEMBLY		D03345	1	4
159	KNOB, BALL		K02712	1	7
160	FROMMET		E00449	2	7
161	CABLE		D03369	1	3 & 7
162	HARNESS, SWITCHES		00185-42A	1	3
163	GASKET HORN	E02441	E02441	1	5 & 6
164	CLAMP, HOSE, SCREW TYPE	J00639	J00639	1	5 & 6
165	HOSE ASSEMBLY, VACUUM EXHAUST	800618A	800618A	1	5 & 6
166	SCREW, MACHINE, HEX HEAD, 1/4-20 x 1 1/4	C02310	C02310	2	5 & 6
167	90 ELBOW, 1/4 FP x 1/4 FP	A00154	A00154	1	5 & 6

POLARIS MODEL 500 & 700

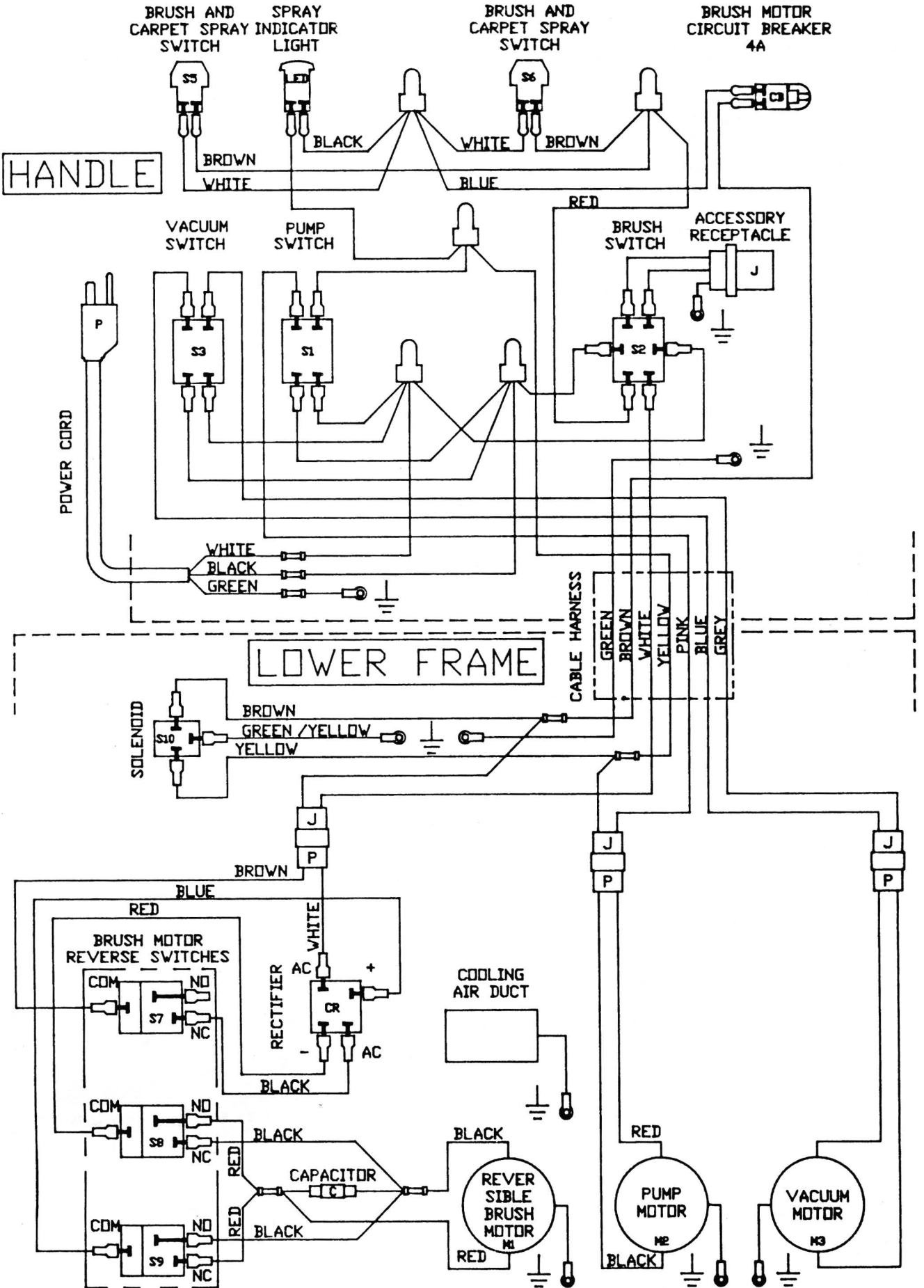
115V AND 230V AC 50/60 HZ  
WIRING DIAGRAM



1753 Blake Avenue, Los Angeles, CA 90031-1006  
323/660-1635 • Fax 323/667-0144

SUPERNOVA 700

115 V AC, 60 HZ  
WIRING DIAGRAM, NO.10092



## NOTES



1753 Blake Avenue  
Los Angeles, CA 90031-1006  
(323) 660-1635  
(800) 338-EDIC  
FAX (323) 667-0144

Effective Date 4/01  
ZF1133